



Courseworks 9.0 – Standalone Installation

A complete User's Guide is located on your Courseworks 9 CD (in the Paulson folder) in .pdf format. In order to fully understand how to set up your training, you must read the following sections of the training manual.

Adding Students.....page 82
Curricula.....page 98
Enrolling Students.....page 108
Enrollment Requirement..... page 130
Passwords.....page 135
Reportspage 141



You can find several video tutorials on our website at <http://www.paulsontraining.com/support/cd-based-training-support/> that will help you get your training up and running.

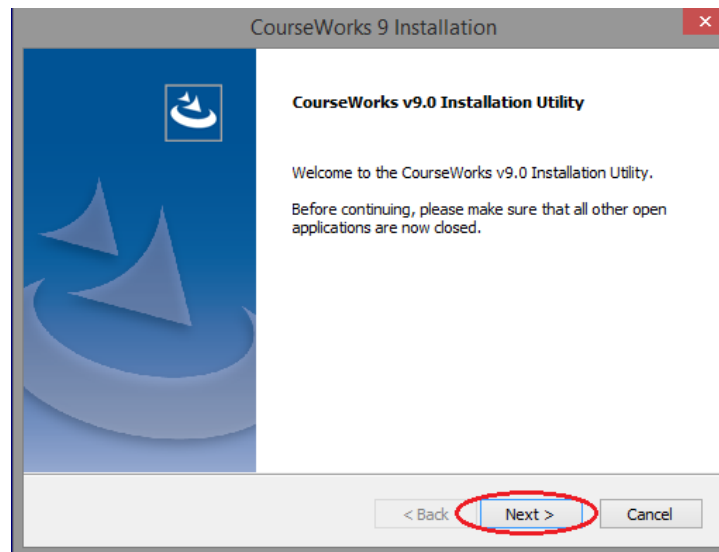
Steps to Complete installation:

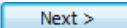
- Install software on the Standalone Computer
- Install lessons on the Standalone Computer
- Activate software

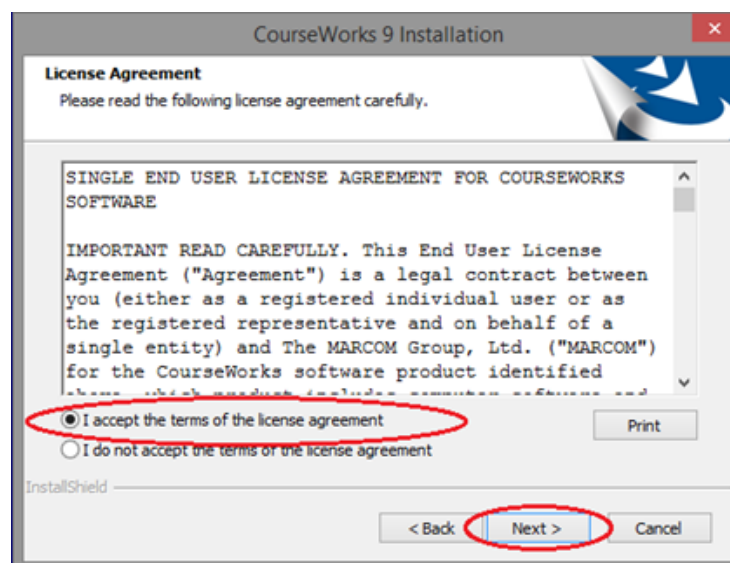
Install of Courseworks 9.0 on a Standalone Computer


To perform this type of installation:

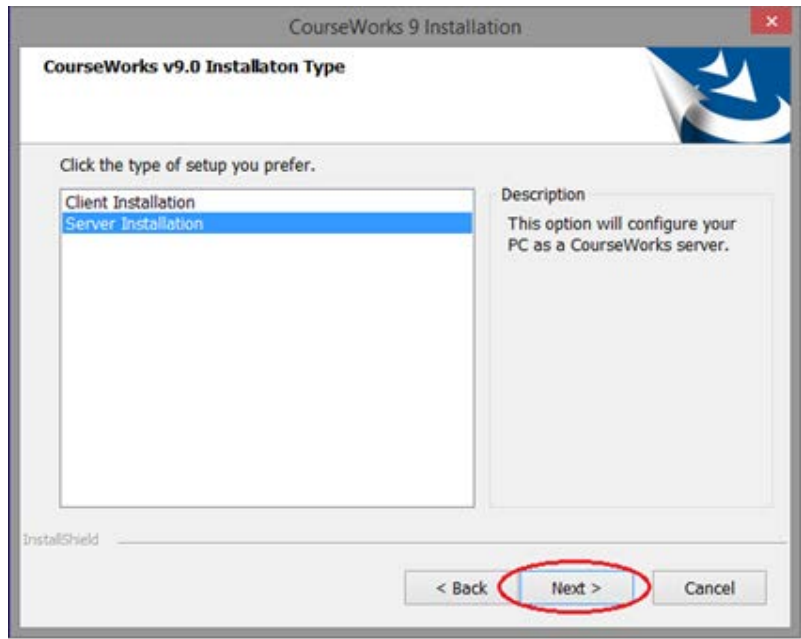
1. Click on the Computer  icon on your desktop and double-click on the CD-ROM drive to open the contents of the CD. Then right-click on the "setup.exe" file and choose "**Run as Administrator**" to initiate the install process.
2. The next screen to appear will be the CourseWorks®9 Installation Utility screen. Click the  button

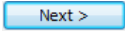


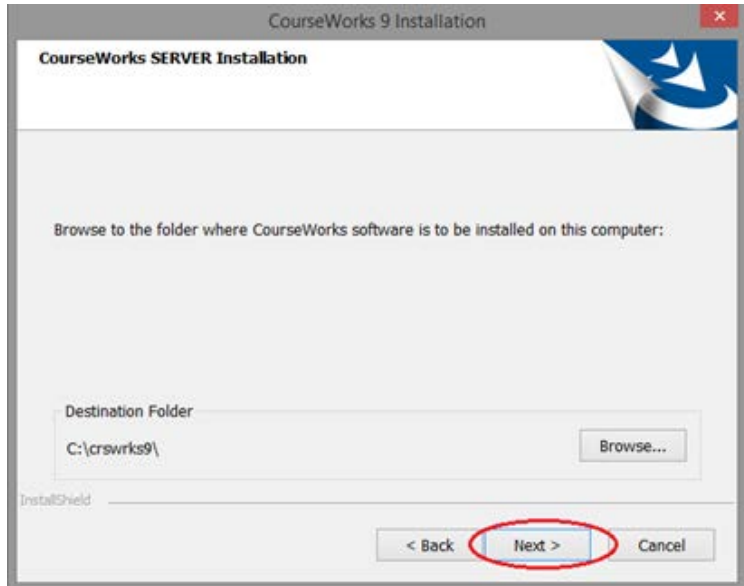
3. You must accept the license agreement to continue with the installation. Click on the  button:



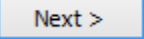
4. Choose "Server Installation" then click  .

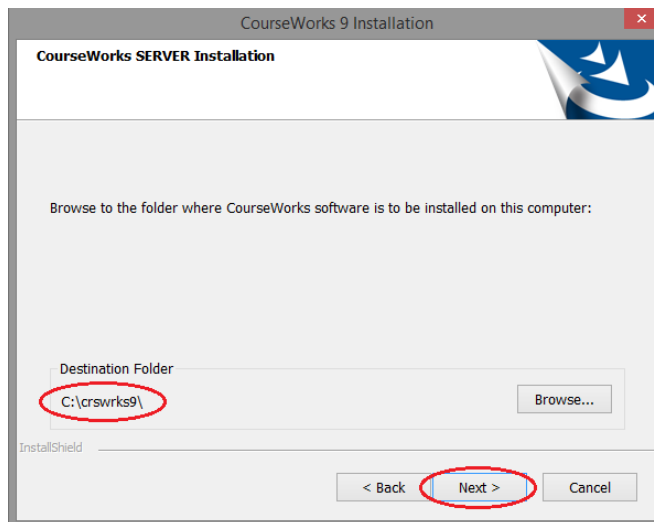


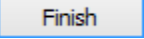
5. You will then be prompted to choose the "destination" folder for the CourseWorks® software. The software can be installed to the default folder on the local machine "c:\crswrks9" by clicking .

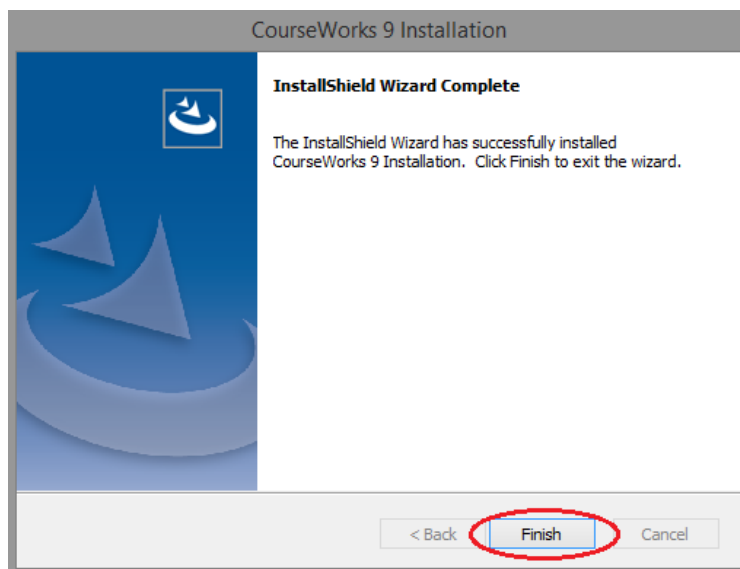


Note: If this is an upgrade from a previous version of CourseWorks, the installation process will automatically redirect your existing database and courses to the new CourseWorks9 location. Therefore, it is extremely important that you DO NOT delete previous CourseWorks install folders.

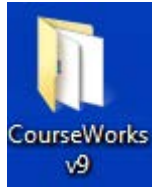
6. Verify that the CourseWorks® installation folder is correct and then press the  button:



7. The completion dialog box will appear when installation is complete. Click  to end the process



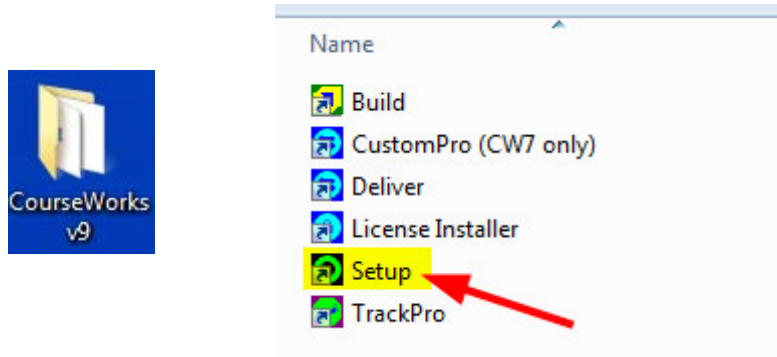
8. You will now have a CourseWorks v9 icon on your desktop.



Installing Lessons – Server Computer

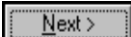
Note: Courses cannot be properly installed and set up using the "Run" command from the "Start" menu on the Windows taskbar. They must be installed using the CourseWorks® Setup program.

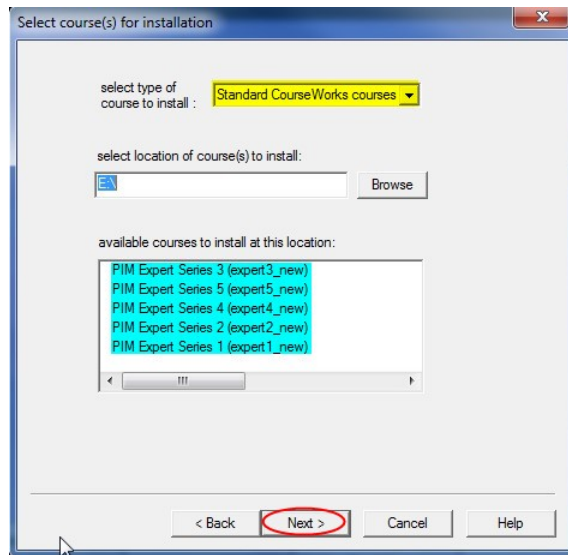
1. Insert a lesson DVD into the DVD-ROM drive of your Server Computer.
2. Click on the CourseWorks v9 icon on your desktop. Then click on "Setup".




3. Click on the  button.

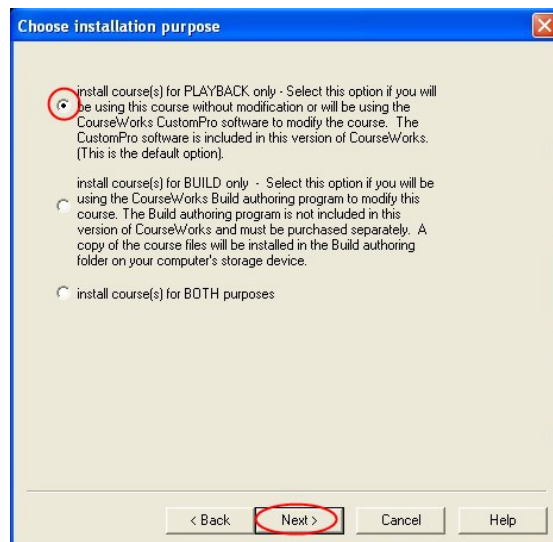



4. At the top, choose "Standard CourseWorks® courses" for the type of course to install. (The second option, "Custom CourseWorks® courses", is used to install any courses you have customized using the CourseWorks® Build Lite feature. See *"Build Lite" for more information.*)
5. The titles of the lessons on the DVD that you inserted will appear in the "available courses to install at this location:" field. Highlight each lesson title you want to install. Click on the  button.

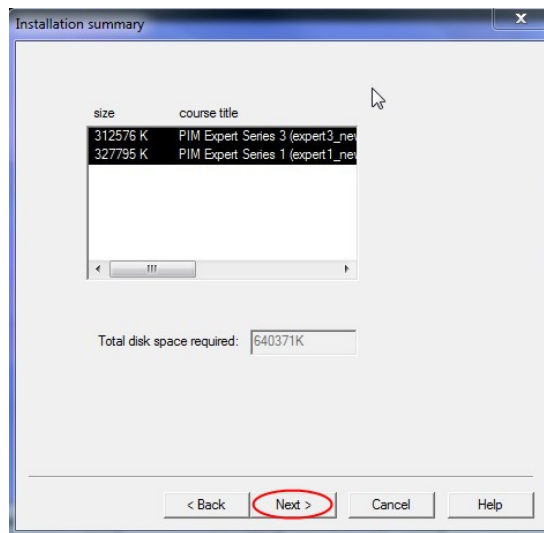



6. Click on the 1st radio button "install course(s) for PLAYBACK only".
7. Click the  button.

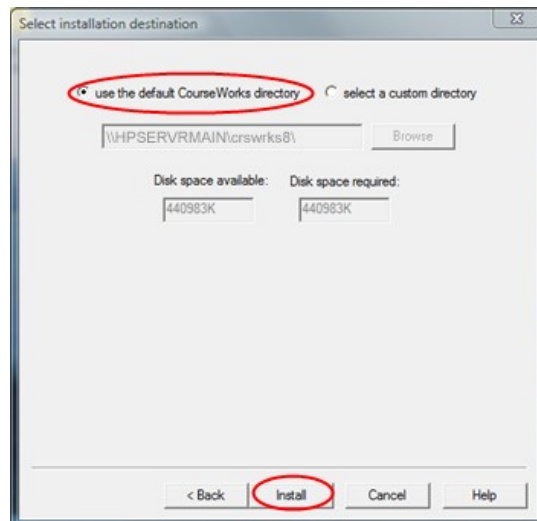
Note: The other options are used if you will be modifying the courses using the CourseWorks® Build software.



8. The Installation Summary screen appears. Click .



9. Select the location for the lessons to be installed - either the default location or a custom directory. It is best to install the lessons on the same drive as where Courseworks 9.0 was installed. *We recommend using the default location.*
10. Click the  button. When the installation process is complete the program will take you back to the main Setup screen.



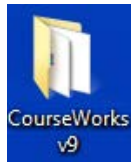
11. Repeat this process for each course DVD.

WARNING!

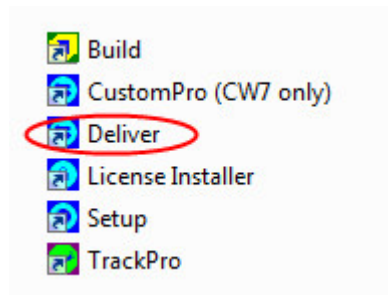
During the time the course is installing, you cannot use the Windows' "ALT" + "TAB" command to reach another software application. Interrupting a course installation will result in only some of the course files being installed, and your database will not be updated!

Activating your Software – Server Computer

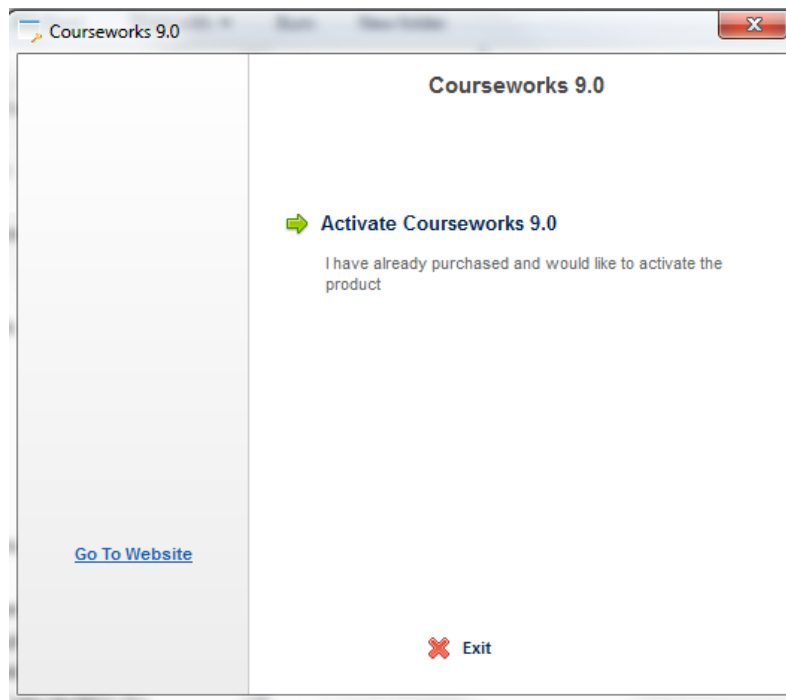
1. Double-click on the CourseWorks® v9 folder located on your desktop.



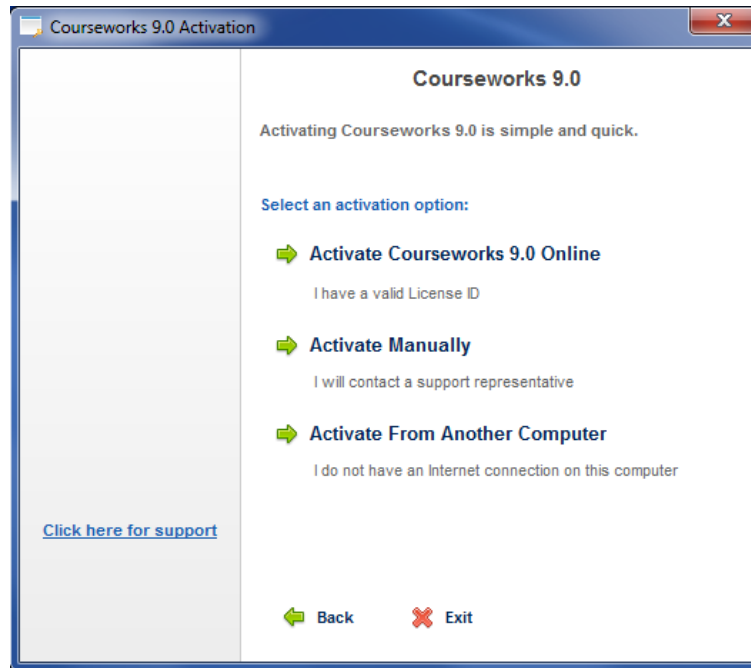
2. Double-click on the "Deliver" icon.



3. The first time you start Deliver you will be asked to Activate CourseWorks® 9. Click on Activate CourseWorks 9.



4. You should have received your License ID and Password in the green paperwork that came with your order. If you have an internet connection on the computer where you installed CourseWorks®, choose “Activate CourseWorks® 9 Online”. If you do not have an internet connection on the computer, then choose one of the other two options.



5. Enter your License ID and Password.



6. You should now see the Product Activation Successful screen. Click the “Continue” button and Deliver will launch.

