



Paulson

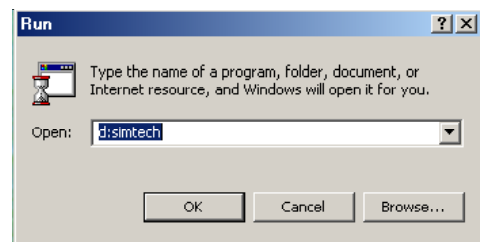
Training Programs, Inc.

Simtech Installation Instructions

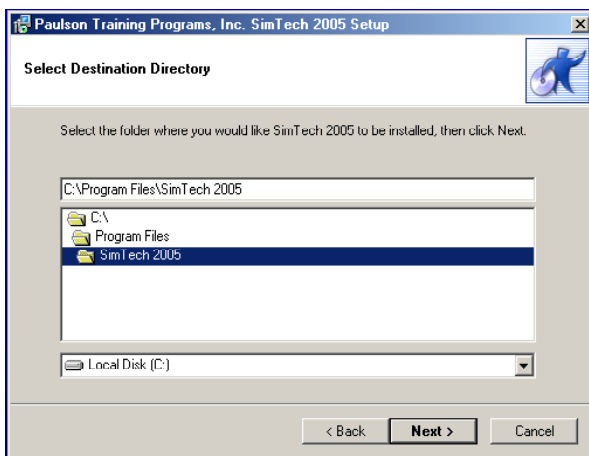
Quick-Start Instructions

Step 1. Close any open applications, especially Outlook.

Step 2. Insert the **Simtech CD**. If the CD does not self-boot, click **Start | Run**, type “x:simtech” (x being the letter of your CD drive). Click **OK**. This will start the installation process.

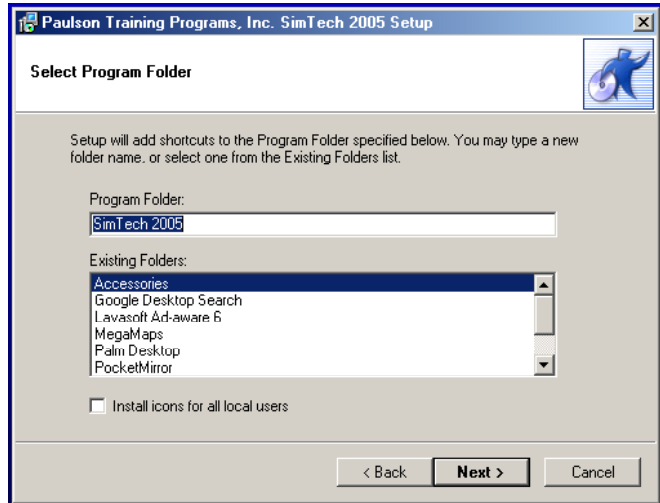


Step 3. At the Welcome screen, choose **Next**.

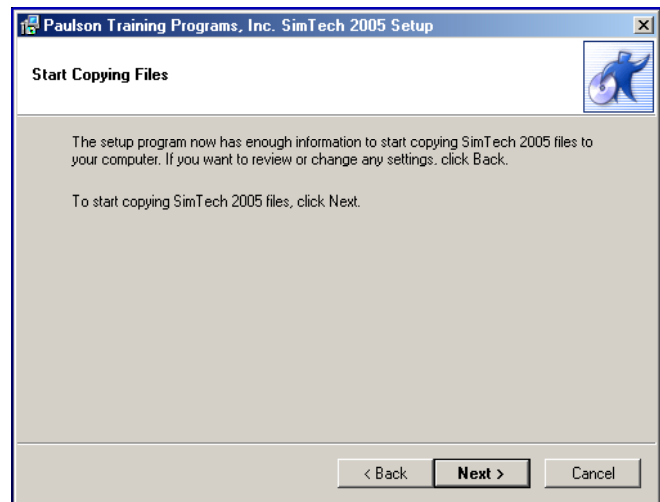


Step 4. Choose the folder where you would like Simtech to be installed.

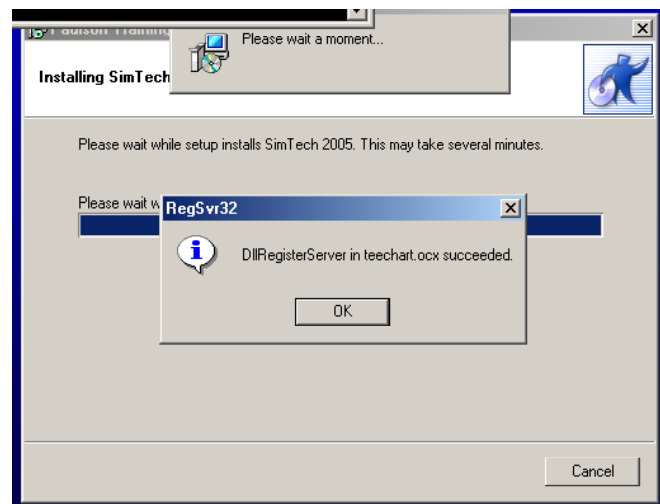
Step 5. Accept the default and choose **Next**.



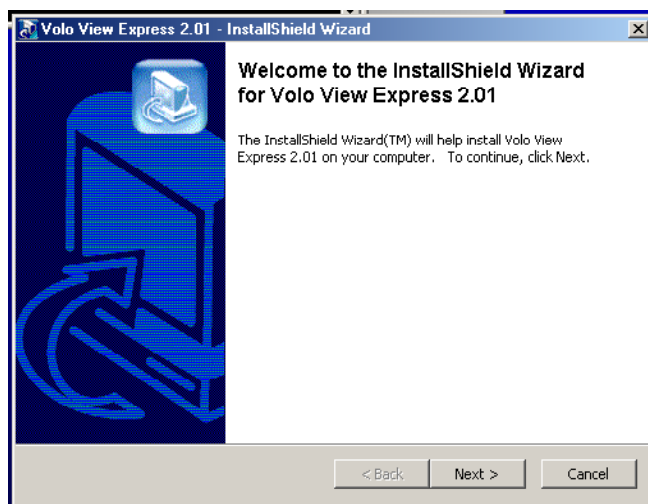
Step 6. Choose **Next** to begin installation.



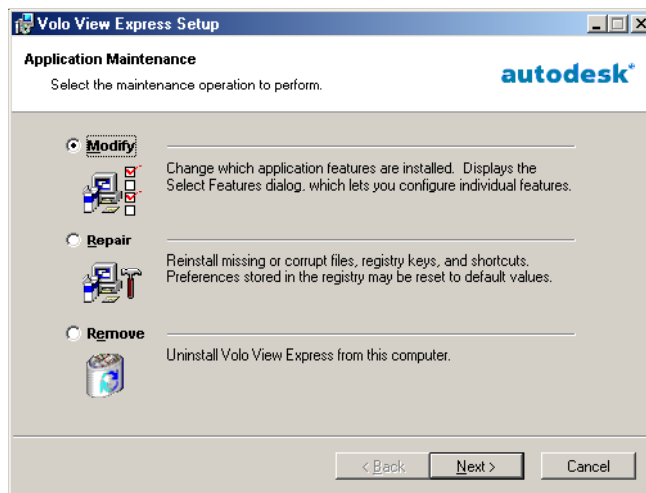
Step 7. Choose **OK**.



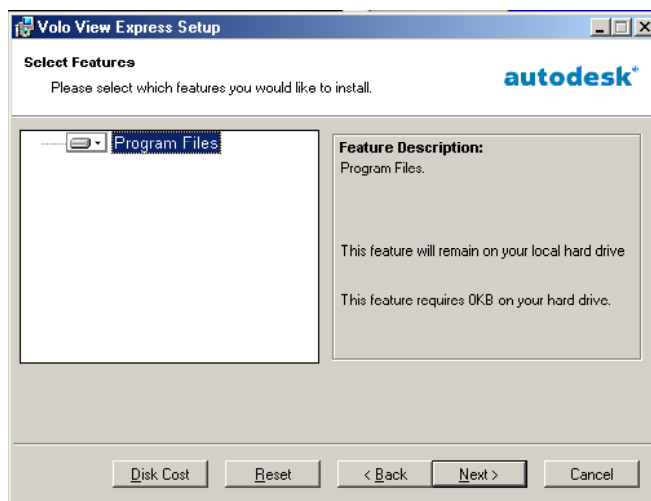
Step 8. Install Volo View Express. Choose **Next**.



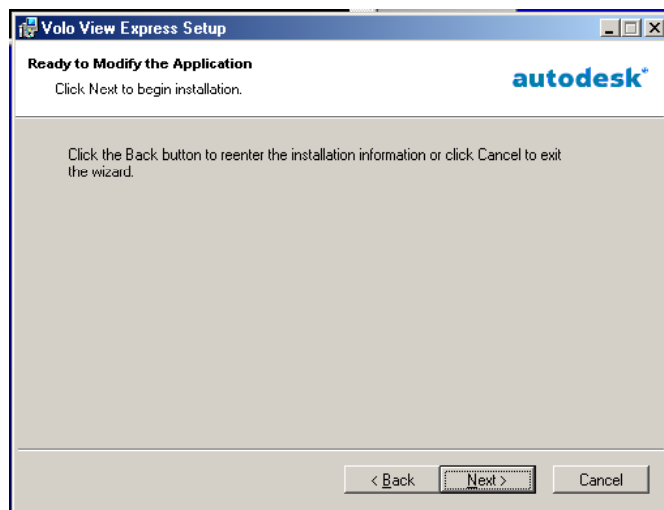
Step 9. Select **Modify** and then choose **Next**.



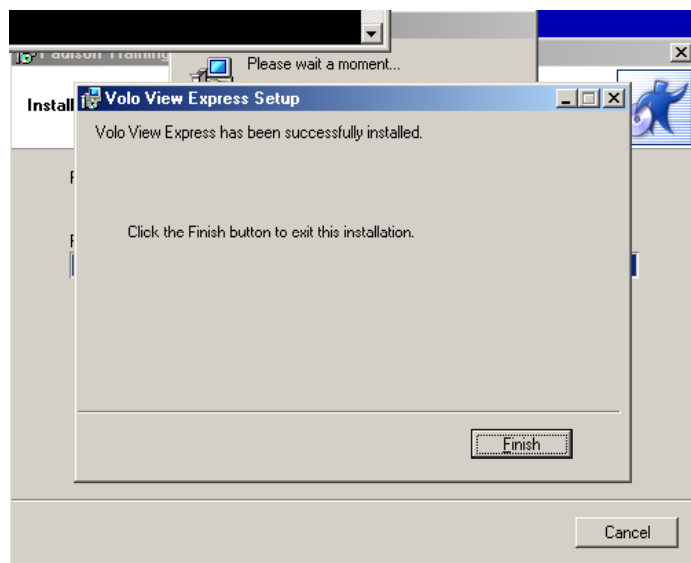
Step 10. Choose **Next**.



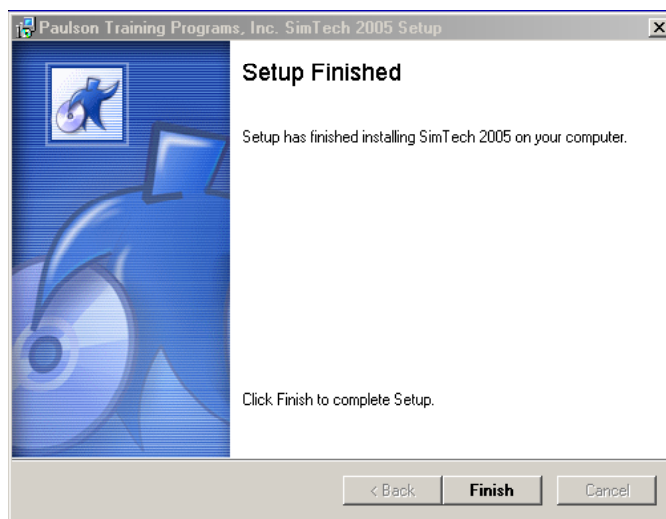
Step 11. Choose Next.



Step 12. Choose Finish.



Step 13. Choose Finish.



**For technical support call 1-860-526-3099
Available from 8:00 am to 5:00 pm EST, Monday through Friday.**