



Courseworks 8.0 – Network Installation - 1 Seat


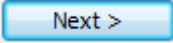
A complete User's Guide is located on your Courseworks 8.0 CD (in the Paulson folder) in .pdf format. In order to fully understand how to set up your training, you must read the following sections of the training manual.

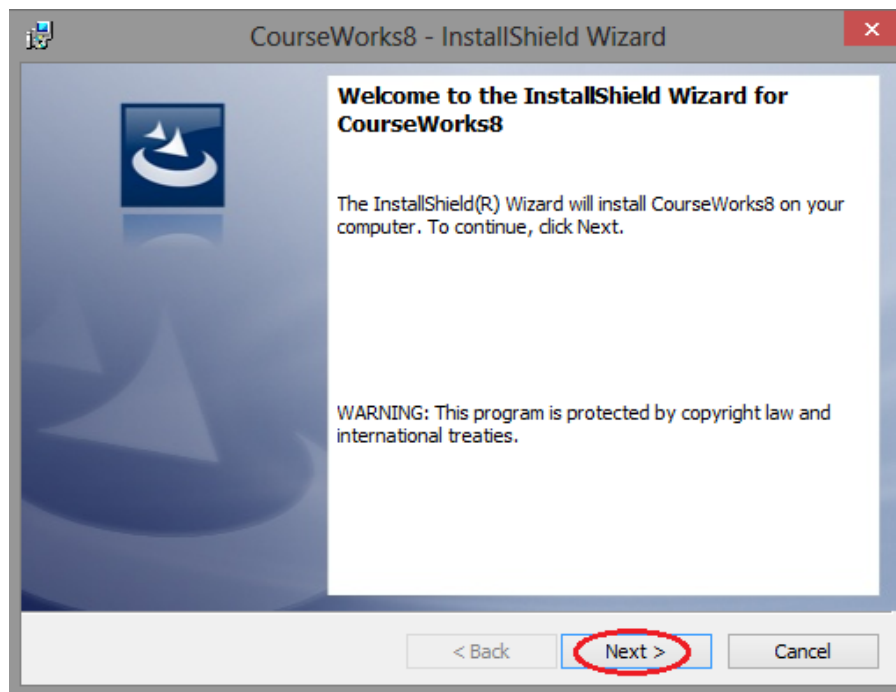
Adding Students.....page 84
Curricula.....page 90
Enroll Students into lessons.....page 109
Enrollment Requirement..... page 130
Passwords.....page 135
Reportspage 141

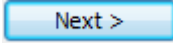
You can find several video tutorials on our website at <http://www.paulsontraining.com/support/cd-based-training-support/> that will help you get your training up and running.

Network Installation - 1 Seat

To perform this type of installation:

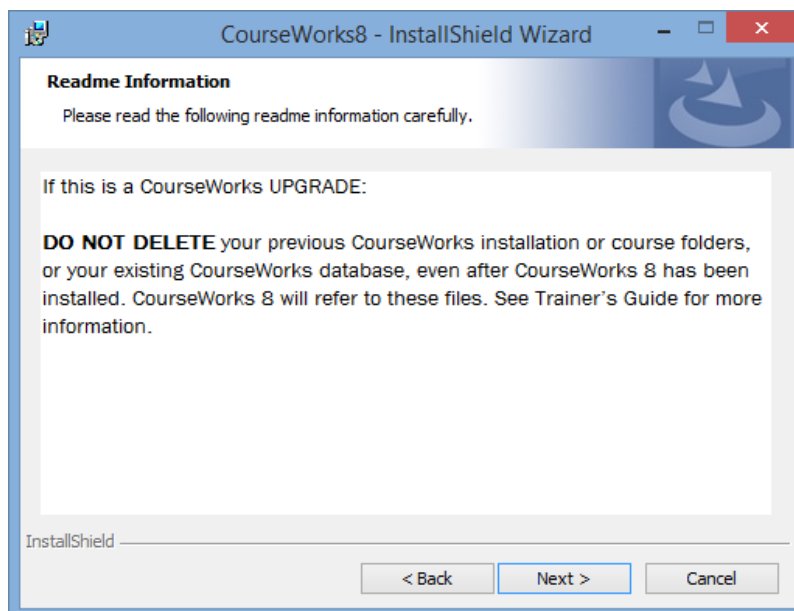
1. Click on the Computer  icon on your desktop and double-click on the CD-ROM drive to open the contents of the CD. Then right-click on the "setup.exe" file and choose "Run as Administrator" to initiate the install process.
2. The next screen to appear will be the CourseWorks®8 Installation Wizard screen. Click the  button:



- When the license agreement appears, you must accept this agreement to continue with the installation (if you do not agree to the terms in the agreement, return the software to the distributor) and click on the  button:

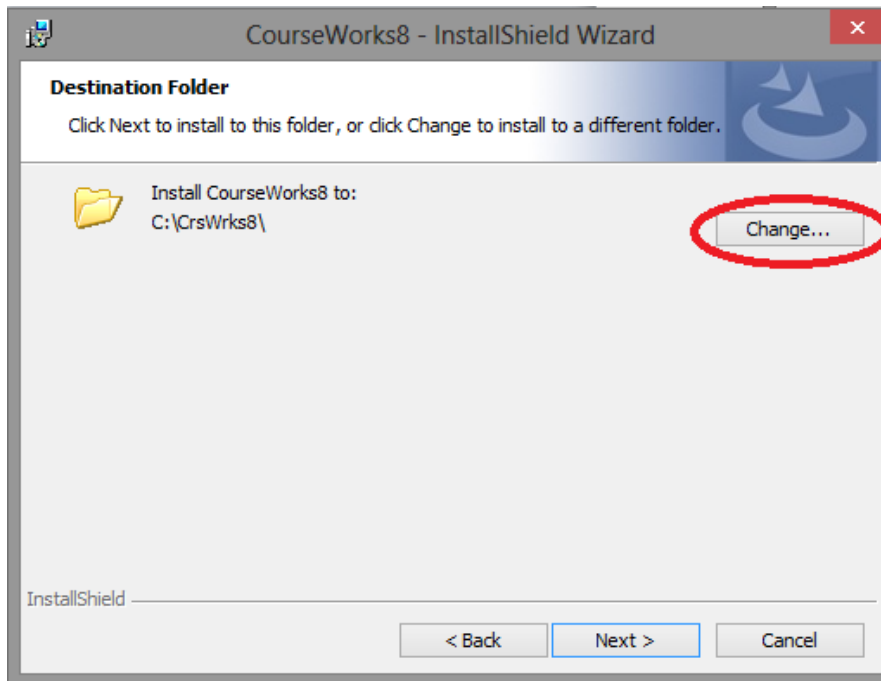


- The next screen to appear is a "Readme" screen:

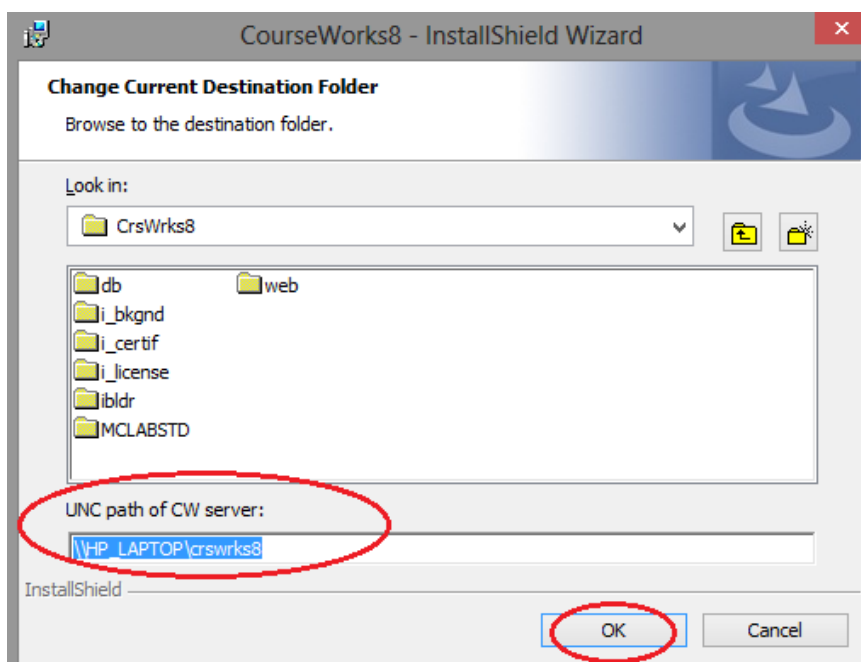


NOTE: Once Courseworks 8 is installed, you can move your Courseworks 7 database to the CrsWrks8/db folder and use the "Attach to Database" command in Track Pro.

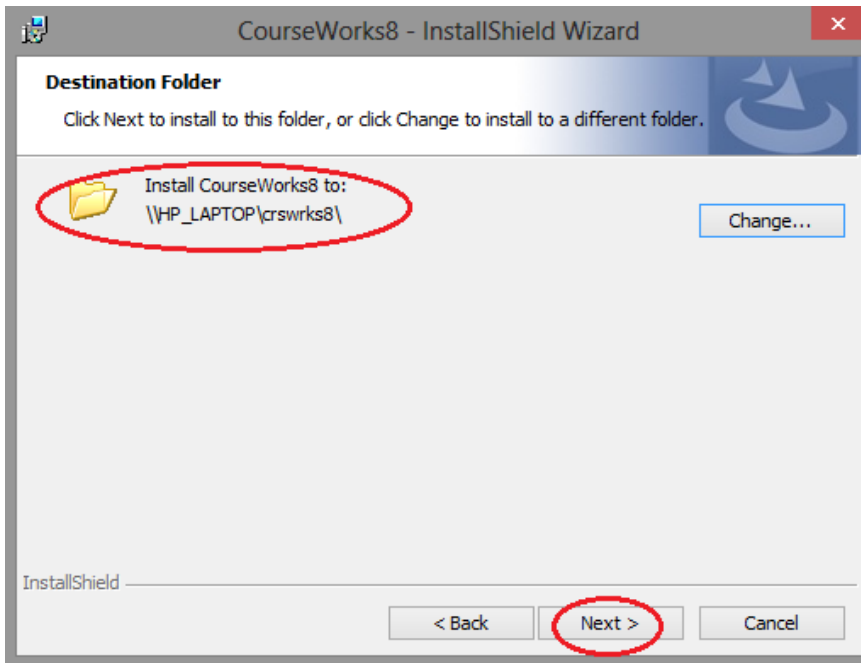
5. You will then be prompted to choose the "destination" folder for the CourseWorks® software. You must choose a location on the **network machine** by clicking the button:




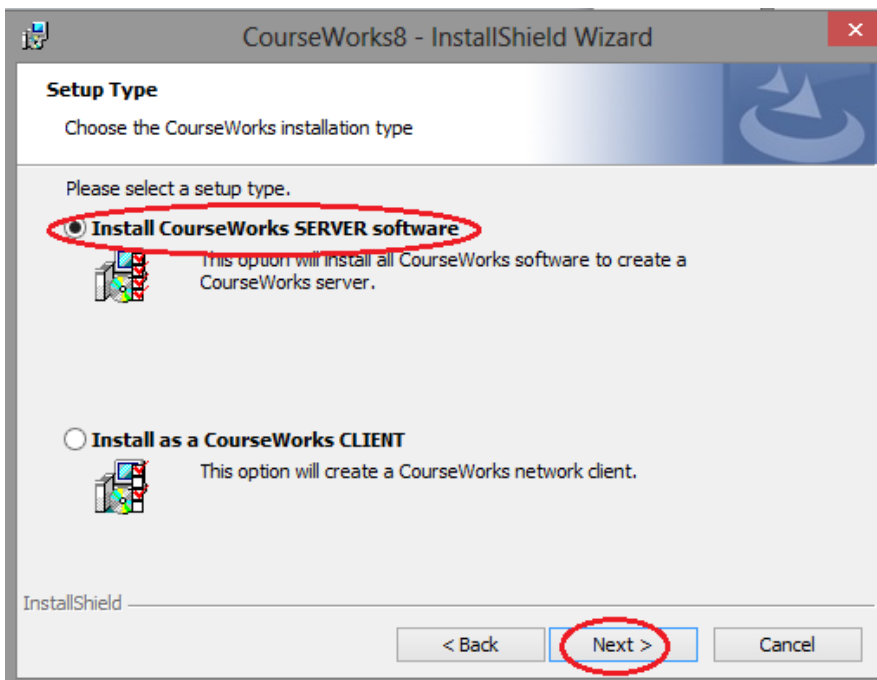
6. Clicking the button allows you to specify the network location by typing in the full UNC path of the networked computer location in the 'UNC path of CW server' edit box, then click the button:




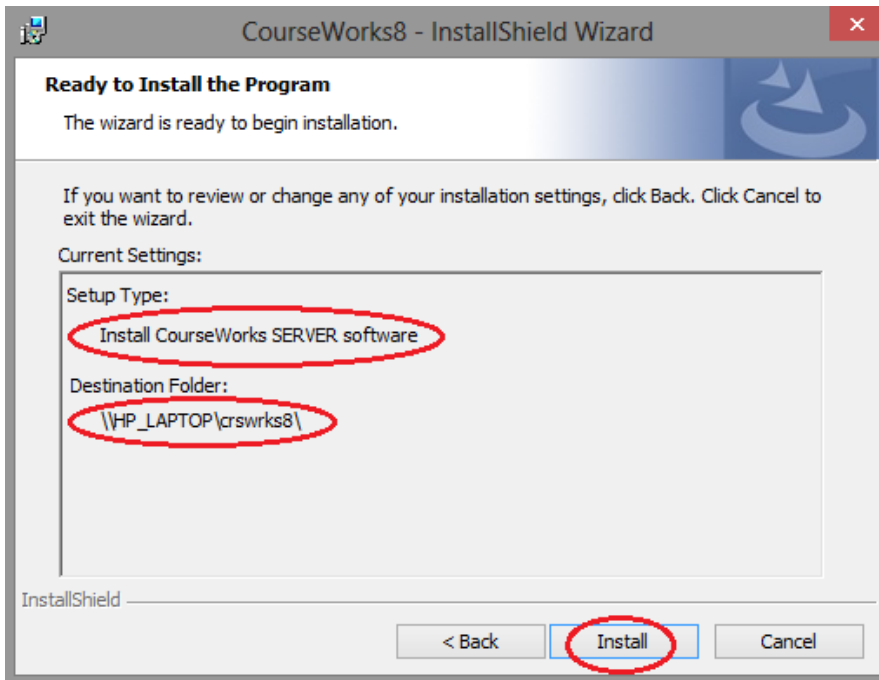
7. Verify the CourseWorks® installation folder and then press :




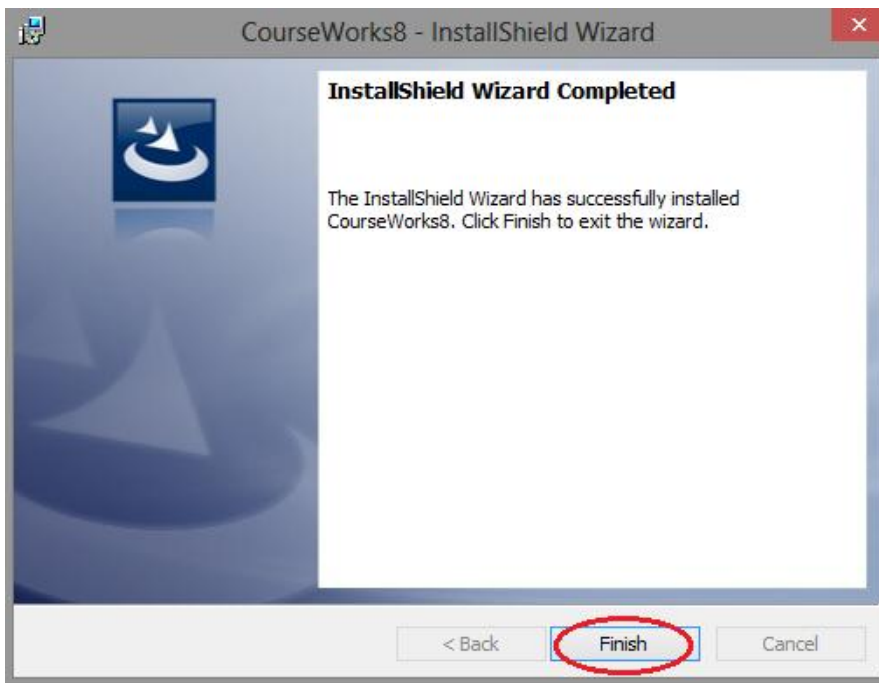
8. The next screen allows you to choose the setup type. Since this is the initial installation of CourseWorks® 8, choose 'Install CourseWorks SERVER software' and click :



9. Verify that the setup type and destination folder are correct and click  to begin the installation process:



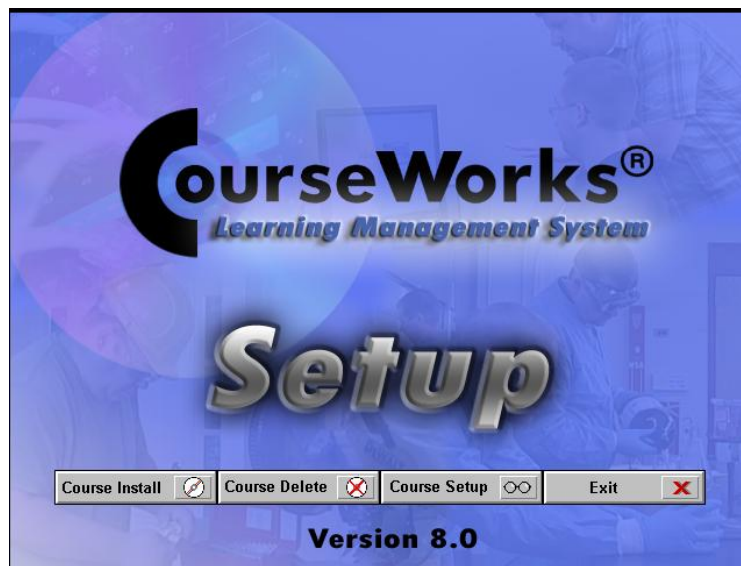
10. The completion dialog box will appear when installation is complete. Click  to end the process.




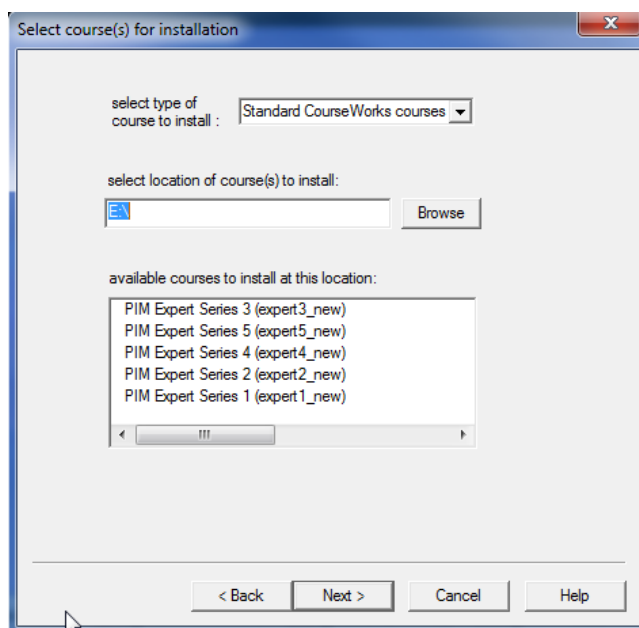
Installing a Lesson


Note: Courses cannot be properly installed and set up using the "Run" command from the "Start" menu on the Windows taskbar. They must be installed using the CourseWorks® Setup program.

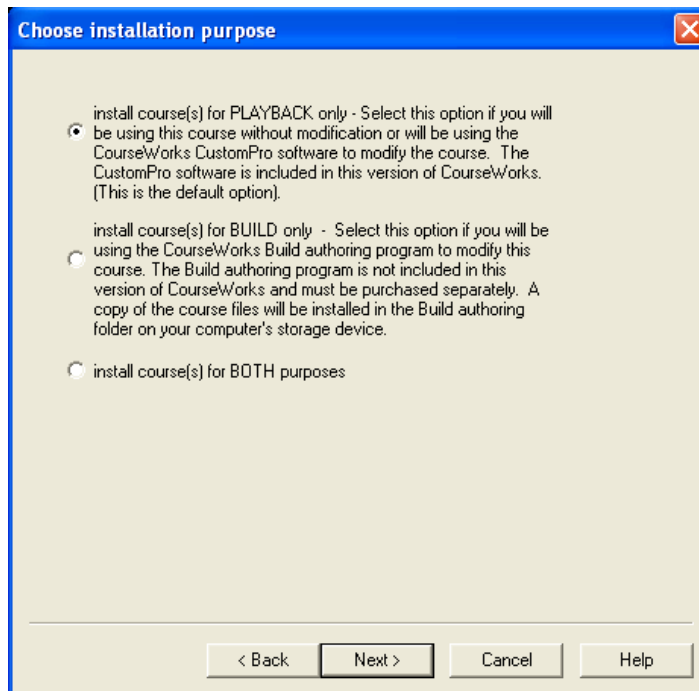
1. Insert the course DVD into the DVD-ROM drive of your computer.
2. Select **[Programs]** ▶ **[CourseWorks® v8.0]** ▶ **[Setup]**.





3. Click on the  button.
4. The program displays the "Select course(s) for installation" dialog box.

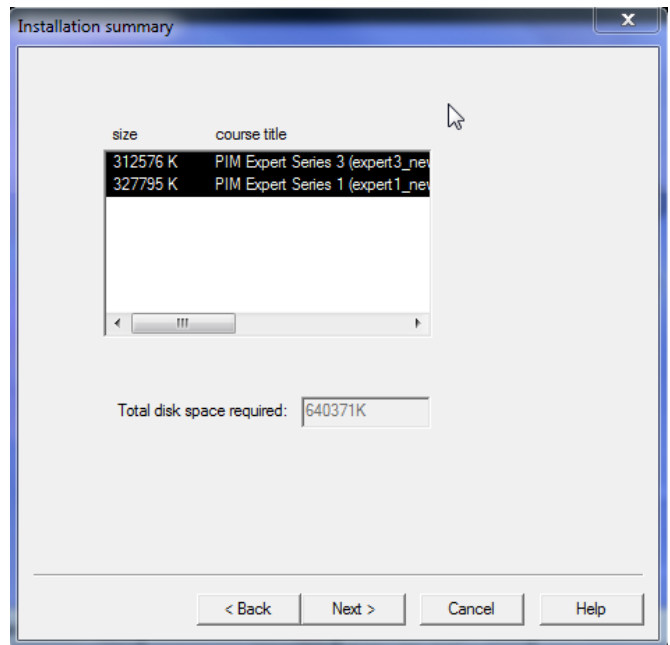


5. Select the type of course you want to install. You will probably choose "Standard CourseWorks® courses". (The second option, "Custom CourseWorks® courses", is used to install courses that you may have customized using the CourseWorks® Build Lite feature. See "Build Lite" for more information.)
6. The titles of the lessons on the DVD that you inserted will appear in the "available courses to install at this location:" field. Highlight each lesson title you want to install. Click on the  button.
7. The "Choose installation purpose" dialog box displays.

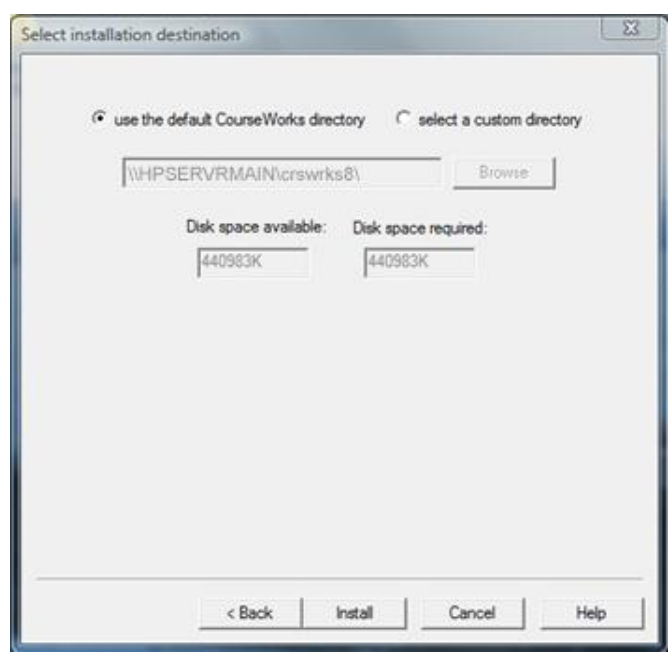


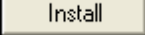

8. Click on the radio button of the installation purpose that you want to use, "Playback", "Build" (authoring) or both. If you will be modifying the courses using the CourseWorks® Build software you will need to select either the second or third radio button. "Playback" is the most common choice.
10. Click the  button.

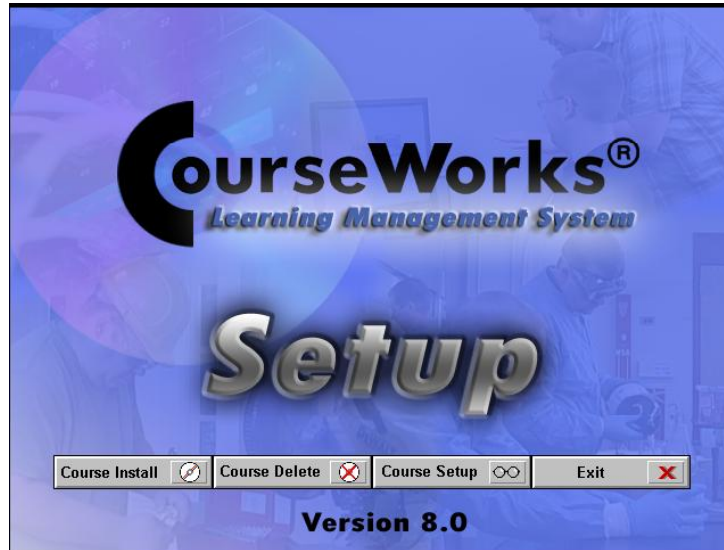
11. The Installation Summary screen appears. Click .



12. The "Select installation destination" screen appears. Select either the default location where the courses are to be installed or a custom location. **(If CourseWorks® was installed on a Server Computer, install the lessons on the Server Computer also.)** *The best place to install lessons is to the CrsWrks8 folder.*



13. Click the  button. When the installation process is complete the program will take you back to the main Setup screen.
14. Repeat this process for each course DVD.
15. Click on the  button.





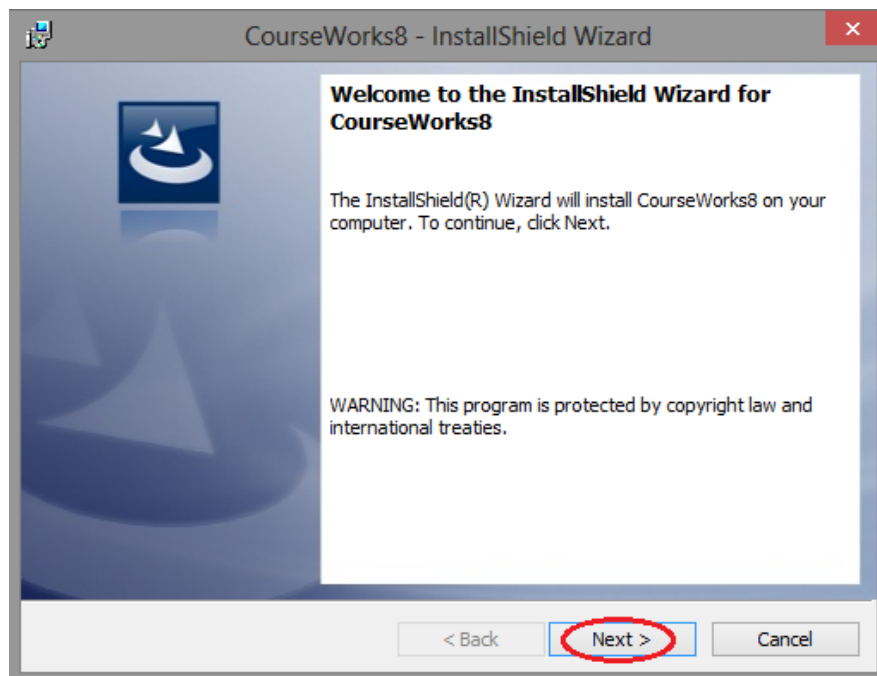
WARNING!


During the time the course is installing, you cannot use the Windows' "ALT" + "TAB" command to reach another software application. Interrupting a course installation will result in only some of the course files being installed, and your database will not be updated!

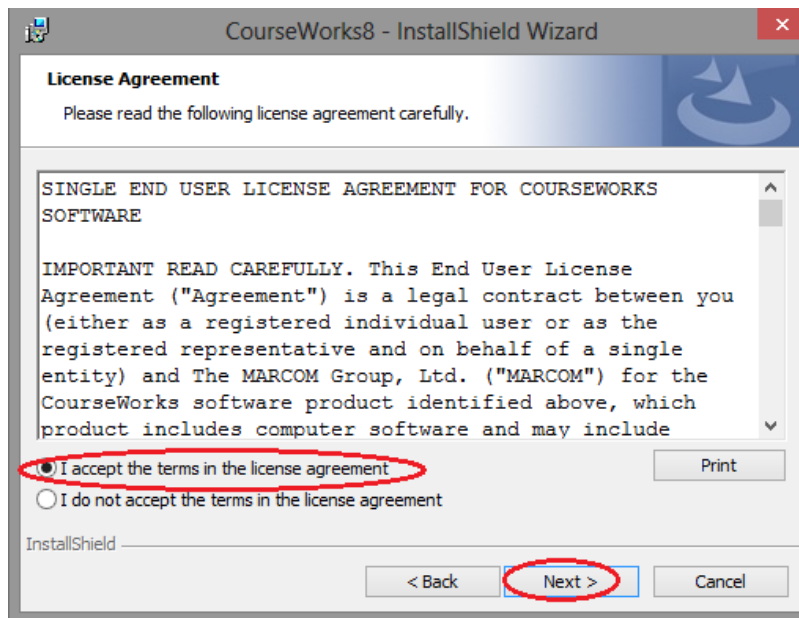
Creating a CourseWorks® Client

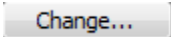
To perform this type of installation:

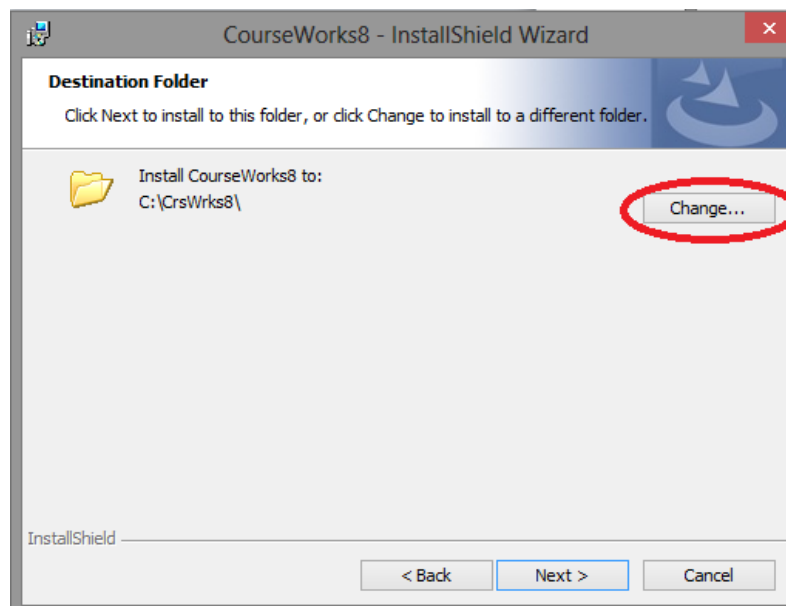
1. Click on the Computer  icon on your desktop and double-click on the CD-ROM drive to open the contents of the CD. Then right-click on the "setup.exe" file and choose "Run as Administrator" to initiate the install process.
2. The next screen to appear will be the CourseWorks®8 Installation Wizard screen. Click the  button:



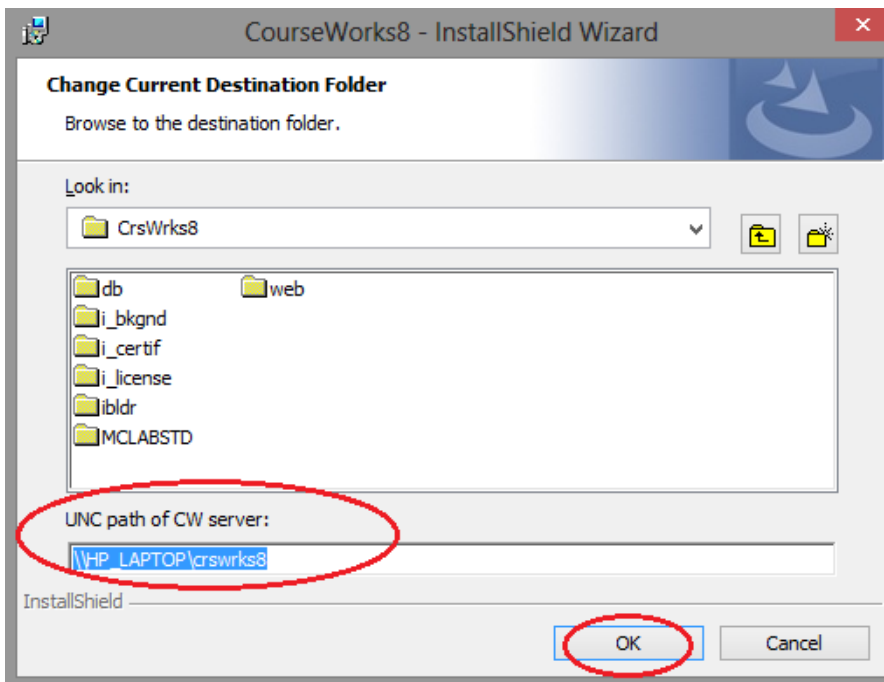
3. When the license agreement appears, you must accept this agreement to continue with the installation (if you do not agree to the terms in the agreement, return the software), then click  to continue.



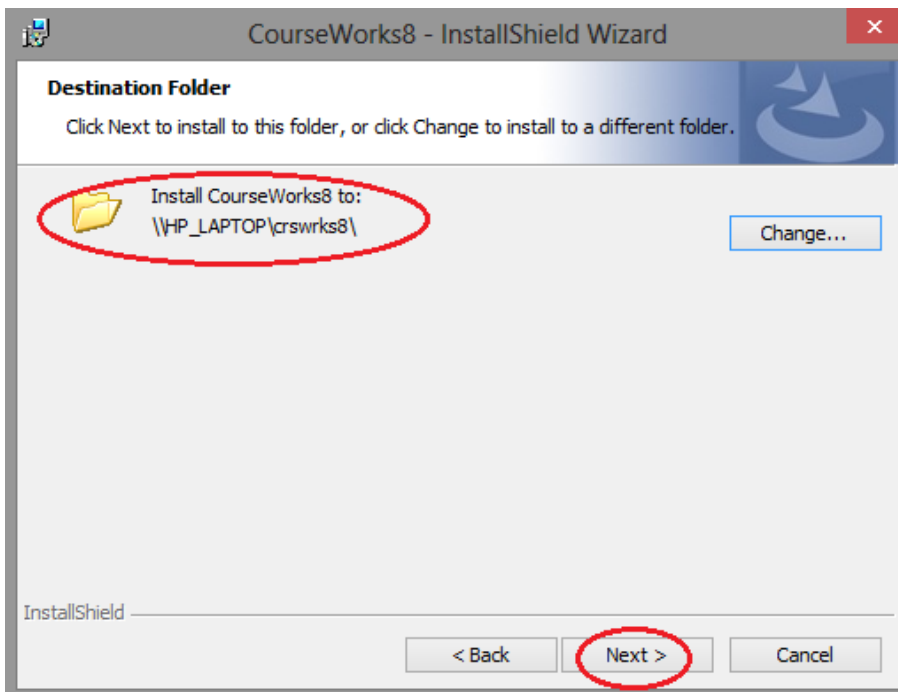
4. You must choose the location where **CourseWorks** is installed on the **Network Server** by clicking  the button.



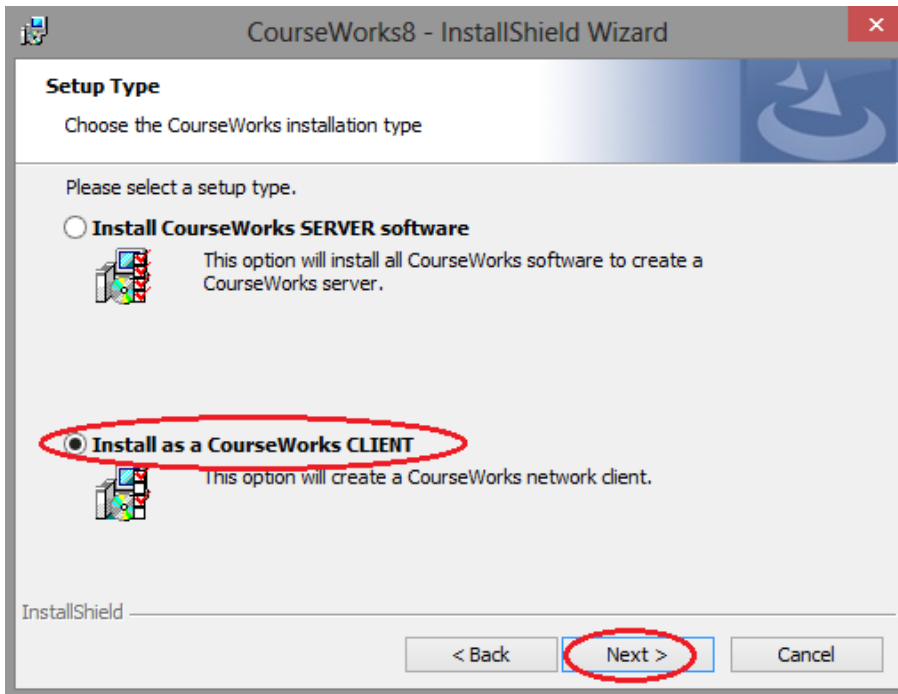
5. Clicking the **Change...** button presents another dialog box where you specify the network location of the server by typing in the full UNC path in the 'UNC path of CW server' edit box, then click: **OK**



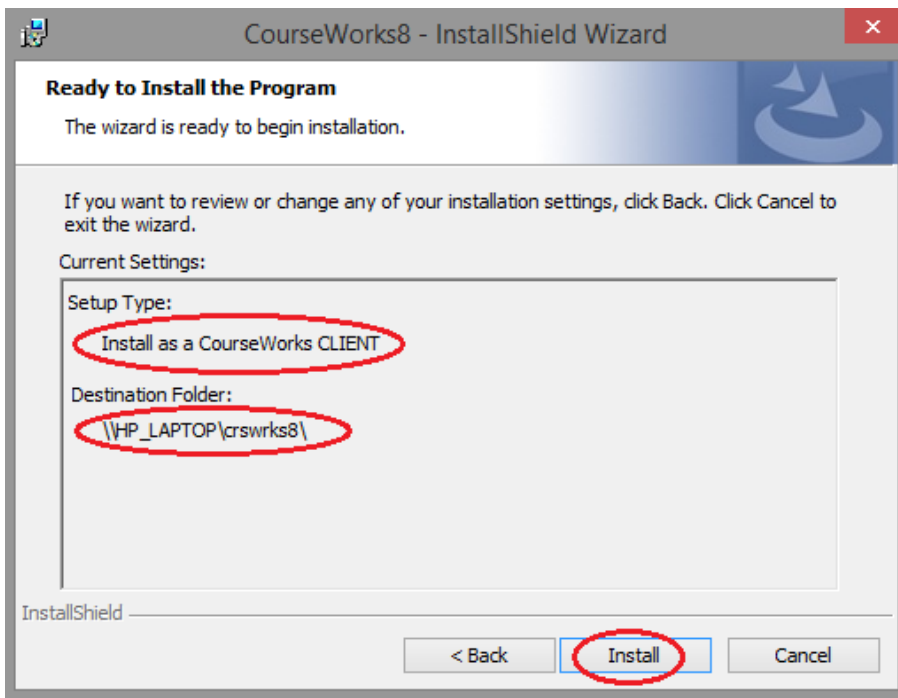
6. Verify that the CourseWorks® installation folder is correct and then press the **Next >** button:




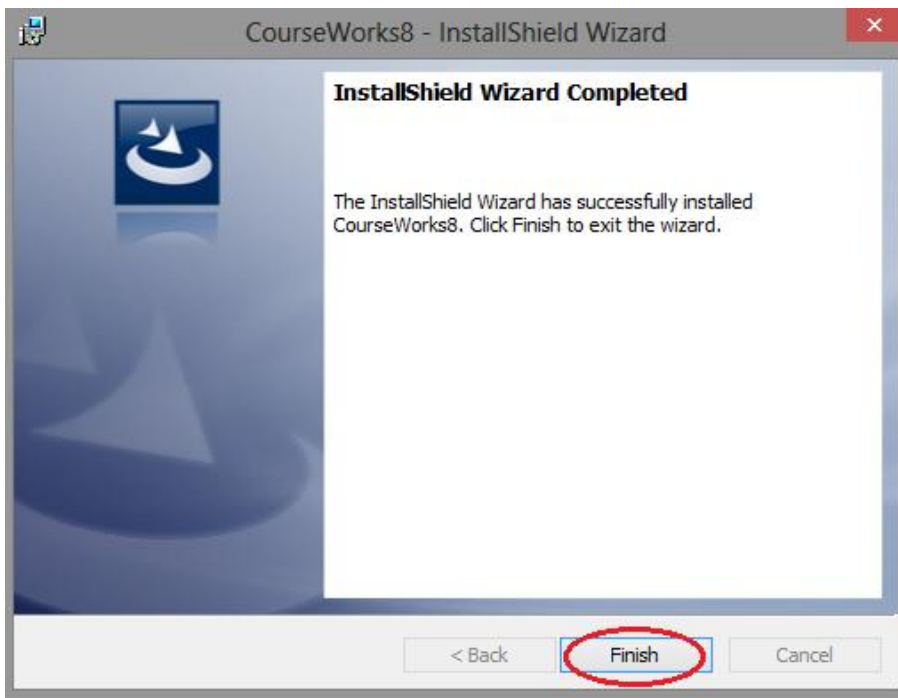
7. The next screen allows you to choose the setup type. Choose 'Install as a CourseWorks client' and click **Next >**:



8. Verify that the setup type and destination folder are correct and click **Install** to begin the installation process:



9. The completion dialog box will appear when installation is complete. Click  to end the process:

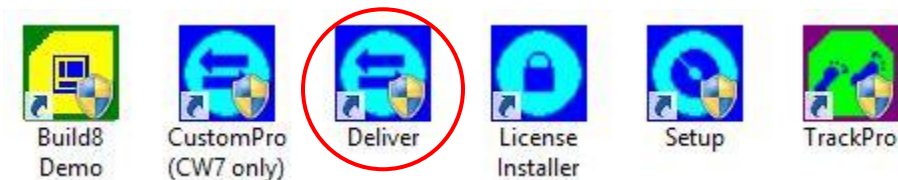


Activating your Software

1. Double-click on the CourseWorks® v8.0 folder located on your desktop.



2. Double-click on the "Deliver" icon.



3. The first time you start Deliver you will be asked to Activate CourseWorks® 8.0



4. You should have received your License ID and Password in an email. If you have an internet connection on the computer where you installed CourseWorks®, choose “Activate CourseWorks® 8.0 Online”. If you do not have an internet connection on the computer, then choose one of the other two options.



5. Enter your License ID and Password.



6. You should now see the Product Activation Successful screen. Click the “Continue” button and Deliver will launch.

