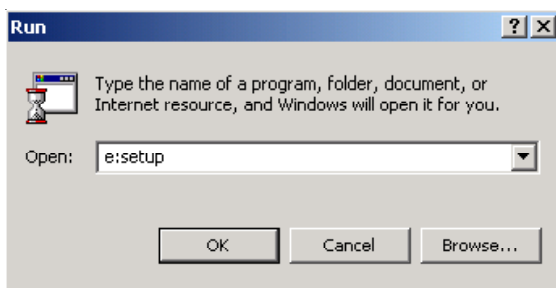

SkillBuilder Installation Instructions

Quick-Start Instructions


NOTE: If you are installing on a Windows NT or 2000 computer, you **MUST** be logged in as an “Administrator” to successfully complete the install.

Step 1. Insert the “SkillBuilder Engine” CD into your CD-ROM drive.

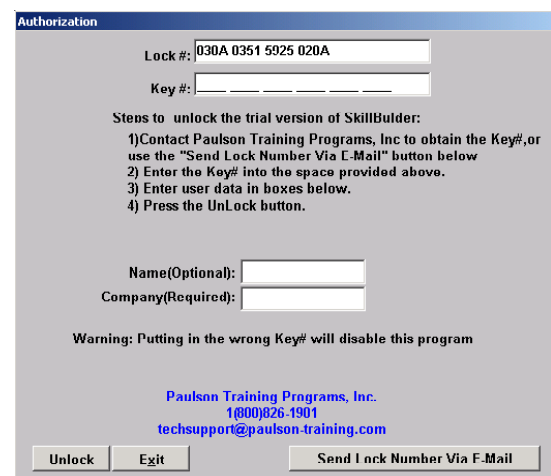


Step 2. Click **Start | Run**, type “x:\setup” (x being the letter of your CD drive). Click **OK**.

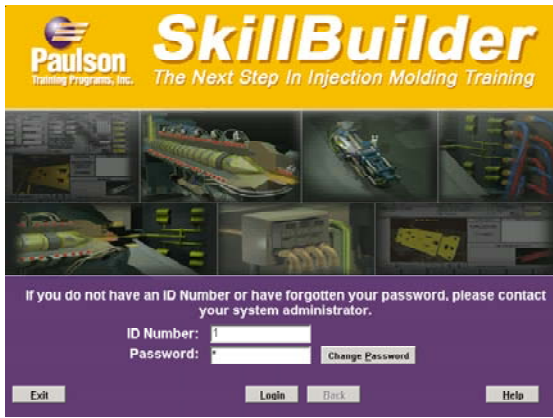
Step 3. Follow on-screen instructions. Change installation path if required, otherwise, accept defaults.

Step 4. Upon completion of the installation, a shortcut  icon to SkillBuilder will be created on the Windows desktop.

Step 5. Doubleclick on the **SkillBuilder** icon to launch the program. A screen will appear listing your **Lock#**. Call or email Paulson with this **Lock#**. We will supply you with a **Key#** which unlocks the program for everyday use.

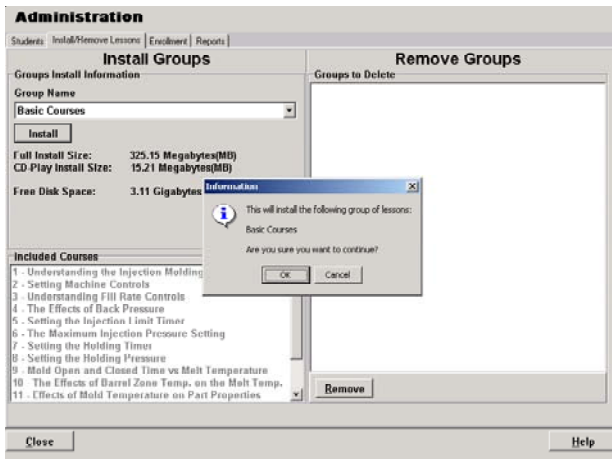


NOTE: Lock#/Key# combinations are unique to each PC running SkillBuilder.



Step 6. After unlocking the program you're ready to install "SkillBuilder Lab Lessons". To do this, launch SkillBuilder. Then log-on as the Administrator. The default settings are ID Number: "1" and Password: "1".

Step 7. Choose the "Administrative Functions" button. Select the "Install/Remove Lessons" tab.



Step 8. Insert the CD(s) containing "SkillBuilder Lab Lessons" and click the "Install" button.

Step 9. Choose between "CD Play" or "Full" installation.

Step 10. The lessons you've installed will now appear in the SkillBuilder main menu when you click the "Select a Lesson" button.

